



How to Install and Configure ArchiveOne® Express

Applies to: ArchiveOne Express; Topic Last Modified: 4 August 2010.

Note

This topic explains how to install and configure ArchiveOne Express.

Before You Begin

Before you perform the procedure in this topic, be aware of the following:

- Installation user account must be a Domain Administrator.
- Installation user account must be a member of the Local Administrators group on the ArchiveOne server.
- Installation user account must be a member of the Local Administrators group on the Exchange server.
- Installation user account must have the right to create a mailbox.
- Installation user account must have the right to create a Domain User Account.
- Installation user account must have the right to set permissions on an Exchange object.

Procedure

Prepare for the ArchiveOne Express Install

1. Download ArchiveOne Express installer.
2. Logon to the ArchiveOne server with a Domain account that has Domain Administrator privileges.

Install ArchiveOne Express

1. Run the newly downloaded ArchiveOne Express installer.
2. Click the **Next** button to initiate the installation.
3. Accept the License Agreement and Click **Next**.
4. Optionally, edit the User Name and Organization listed in the Customer Information screen and click **Next**.
5. The next page (Diagram 1), shows the components that may be installed. Under most circumstances select all components.
 - Component 1 is the Service. Required by Server.
 - Component 2 is the Admin Console. Required on ArchiveOne Server. Optional on other clients.
 - Component 3 are the Web services. Required on a Server, Front-End or other as your requirement dictates.
 - Component 4 is the Quick Link Client MSI Package. Optional.
 - Component 5 is the Laptop Client MSI Package. Optional.
 - Component 6 is the PST Processor Client. Required for PST processing functionality.

This dialog box also allows you to choose the local install directory.

When you have made your selections, click **Install**.

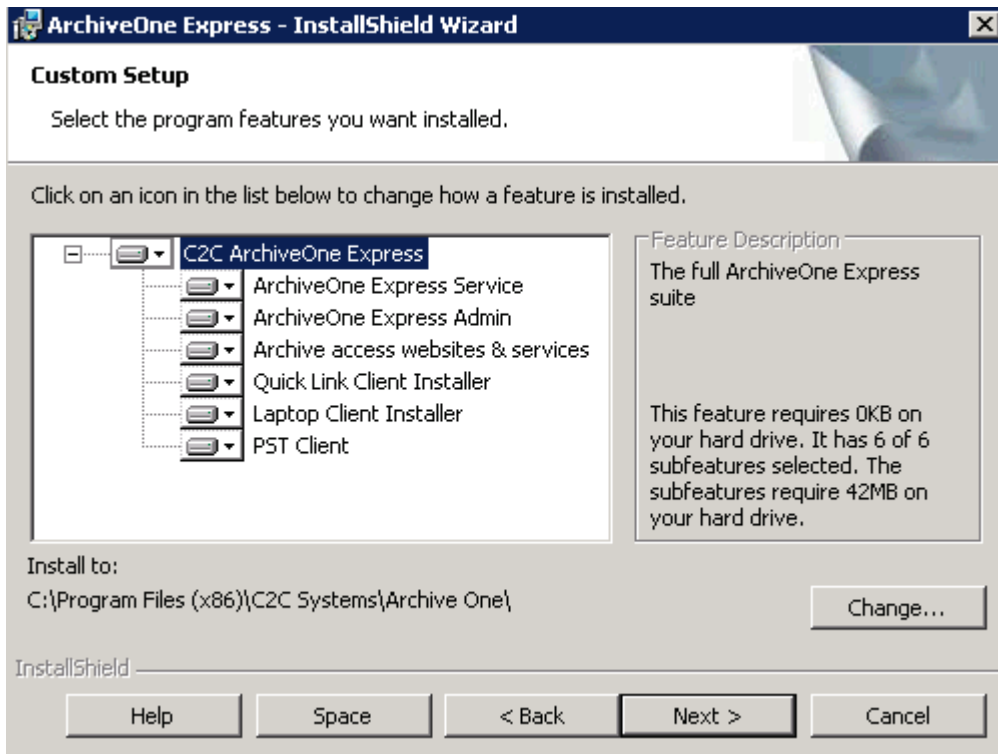


Diagram 1

1. Read the Acrobat Reader warning and click **OK**.
2. The next dialog box (Diagram 2), tells you that you need to install Downloadable MAPI. This is a Microsoft component that allows our software to configure the required Active Directory objects during software installation. This is not required if you're installing against Exchange 2003 SP2 and Exchange Management Tools are installed. Download this component and install it as per the Microsoft instructions. Then click **OK**.

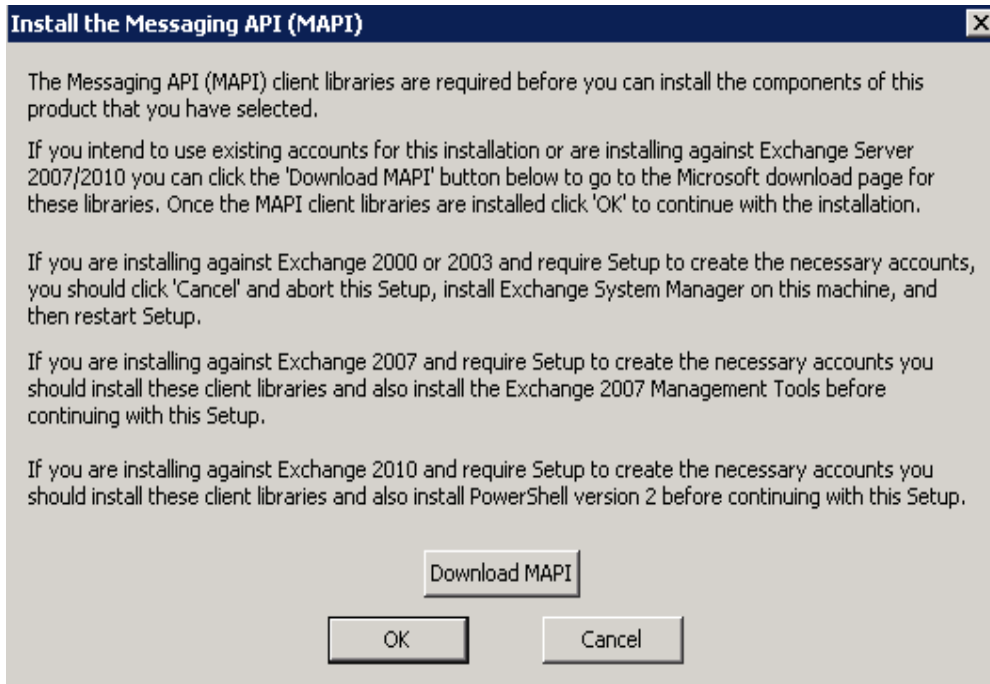


Diagram 2

3. Choose your Exchange server. This is so ArchiveOne can connect to Exchange and process emails (Diagram 3). This should be the NetBIOS name of your Exchange.

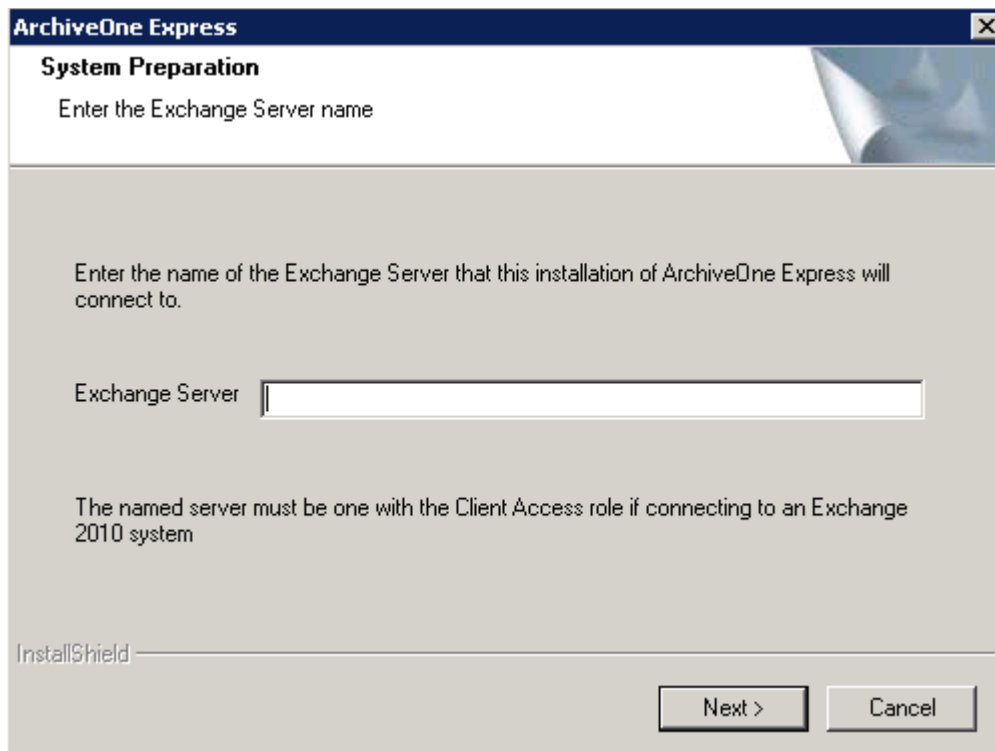


Diagram 3

- Next, you will be prompted to select a location for the configuration data. This is stored in a share called 'Add-ins'. It is created the first time you start ArchiveOne admin console. The default Exchange location is fine for most purposes, but you may want to put it locally if you intend to upgrade your Exchange environment in the near future. Option 3 is applicable in some Exchange High Availability clustered environments (Diagram 4).

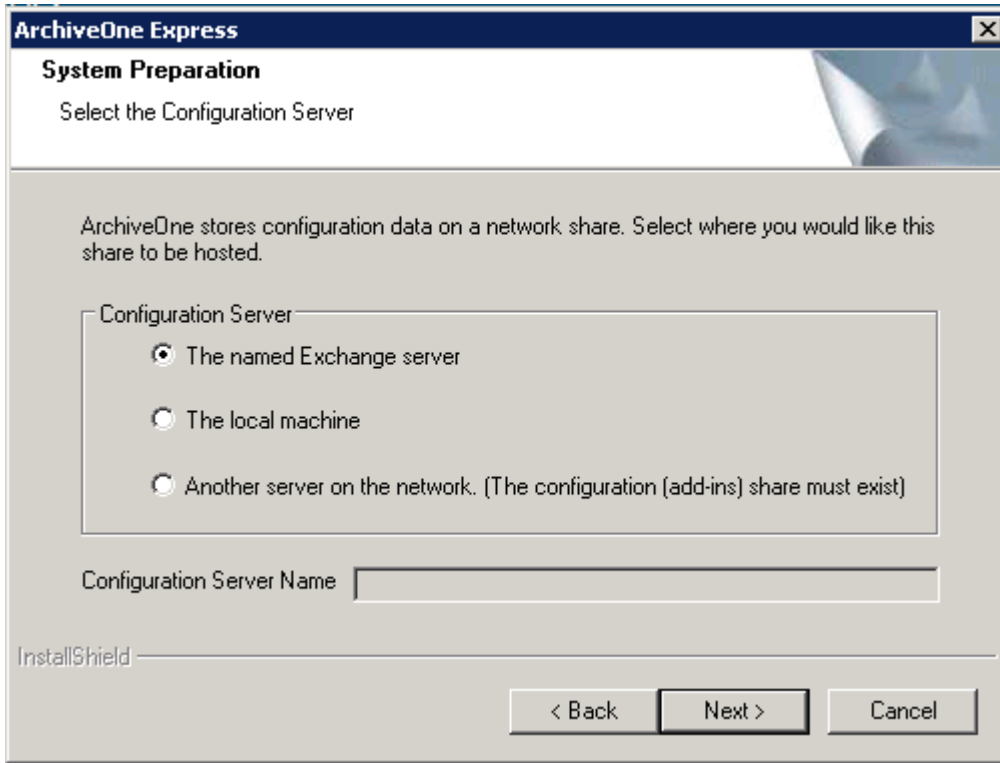


Diagram 4

- Next you will be prompted to choose an ArchiveOne Users group. This group contains users who are allowed access to the ArchiveOne Admin Console. Click **Next**.
- You now have the option of creating the Service Account. Please note your password, and click **Next** (Diagram 5).

User Account Creation Summary [X]

These settings will be used to create the user account needed by this installation. Please amend any information that needs to be corrected and enter the password before clicking OK

Account Name:

Password:

Confirm Password:

Domain Controller:

Domain:

Active Directory Site:

Please deselect any controller which should not be checked for account replication

DCs in Site: k3.ten.com

Diagram 5

7. Next, choose the 2nd radio button for your DCOM environment.
8. The installation routine then creates and configures your accounts for you (Diagram 6).

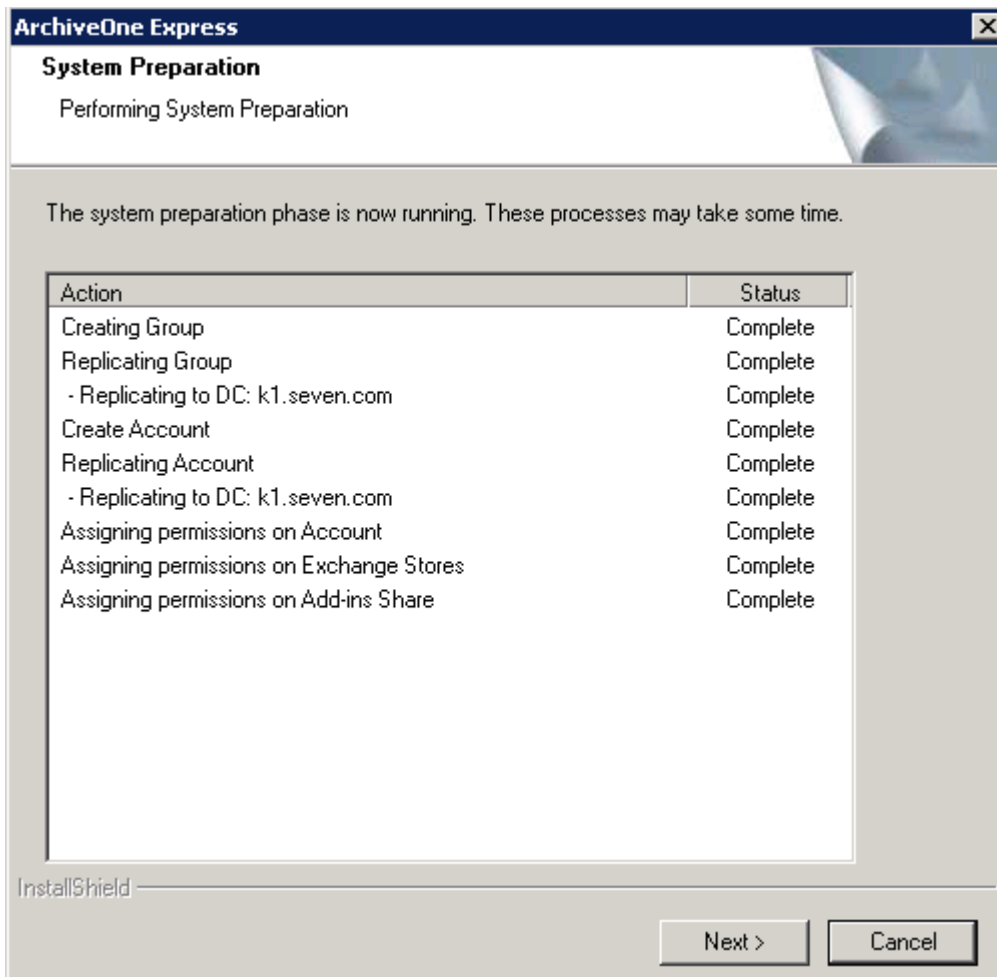


Diagram 6

9. Next the Service will start. Please tick the check box and click **Next**.
10. Click **Install**.

Configure ArchiveOne Express

1. Please start the ArchiveOne Admin Console.
2. On selecting a node, for example, Mailbox manager, you will be prompted to connect to a server. Select the server that hosts your configuration data as given in diagram 4.
3. The System Configuration Wizard will now start.
4. Click **Next**. You will now start the Archiving Wizard. The first dialog asks for a number of years in the past and number of years in the future to create repositories for. Ascertain how many years back you have email that you wish to archive for. It is common to put all email before a cut-off date into a 'catch-all' repository. For example, 'pre-2000' if you have a small number of emails from the 1990's. You should also choose a folder location for the root of the archive hierarchy (Diagram 7).

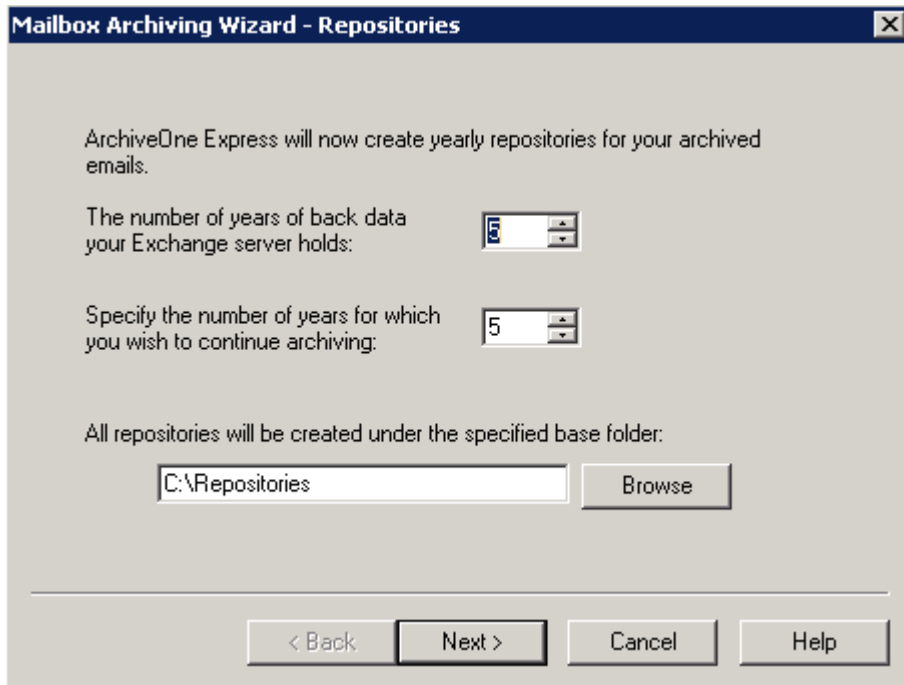


Diagram 7

5. Click **Next**. Please choose to archive data by age or size. Age is the default and is documented in this guide. For further information on making this decision, consult the manual or C2C Technical Support.
6. Click **Next**. Choose an offset for your time-based policy. It is usual to accept the default 90 days here.
7. You now have the option to enable Journal Archiving. Place a tick in the enable checkbox and click **Next**.
8. You should now select the Journal Mailbox that ArchiveOne Express should process (Diagram 8).

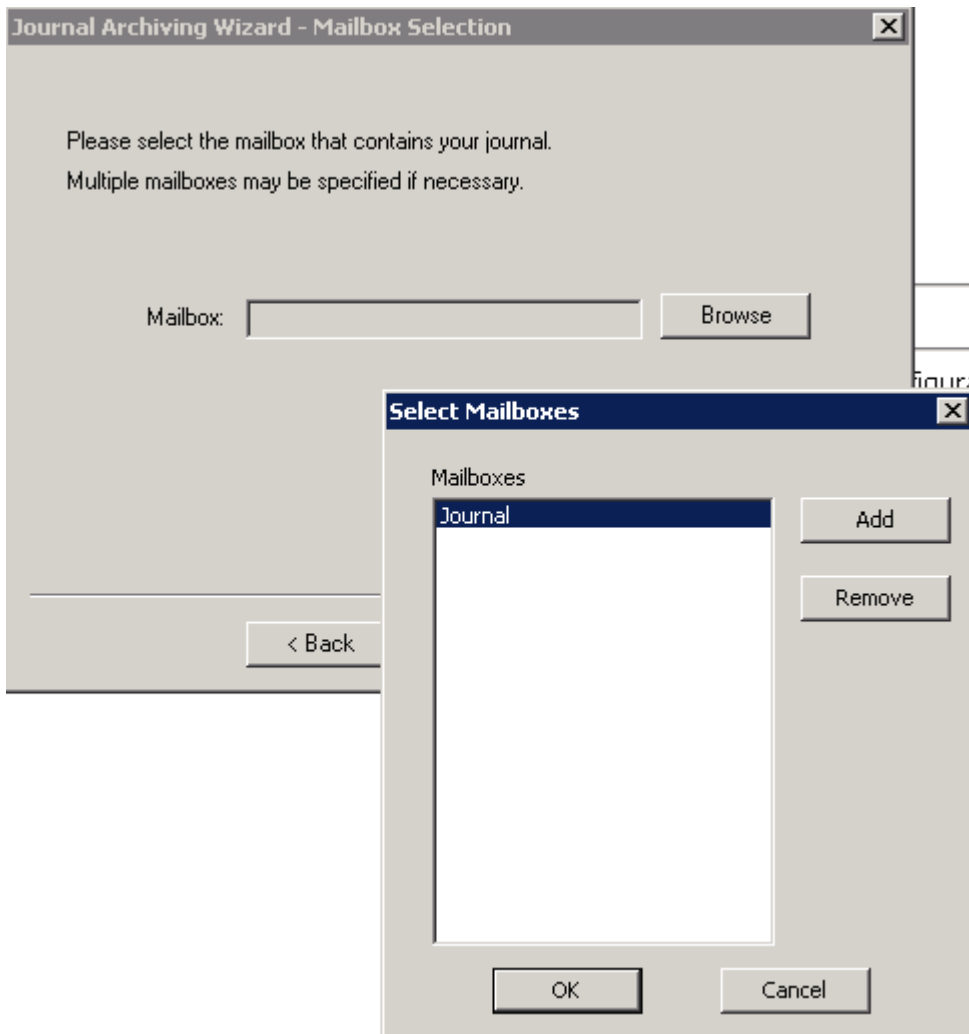


Diagram 8

9. You will now be informed that you are beginning the Journal Archiving Wizard. Click **Next**.
10. Please hit review/change and insert your ArchiveOne License Key into this text box. Click **OK**. If necessary, please contact your reseller for licensing details. You can also contact ukadmin@c2c.com for further Licensing assistance.
11. The next dialog box requires that you set up a public folder to hold messages that you have retrieved to a public folder. You may create a new folder if you wish, but please set the correct read/write permissions for it in Exchange. Consult your Exchange Administrator for further information on this process.
12. Next, you must enter the URL for the Search & Retrieval Website (Diagram 9). This Fully Qualified Domain Name (FQDN) should be publicly available if you have external users that need to retrieve email from their archives. If your users are all internal, a NetBIOS name may be entered. Click **Next**. You can also configure your DNS services to resolve this domain name to different IP addresses depending on host location (split-DNS). This will allow internal and external users to access their archives.

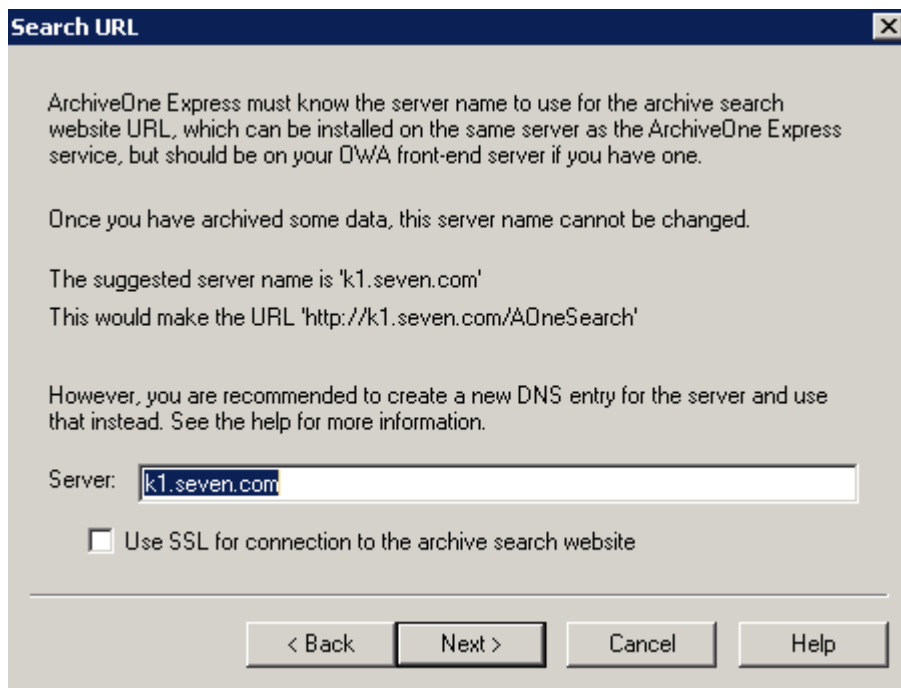


Diagram 9

13. You are now prompted to provide details of your OWA configuration to ArchiveOne (Diagram 10). Again, if you have external users that need to make archive retrievals, this will need to be a publically available domain name. If internal only, then a NetBIOS name will suffice. You can also configure your DNS services to resolve this domain name to different IP addresses depending on host location (split-DNS). This will allow internal and external users to access their archives.

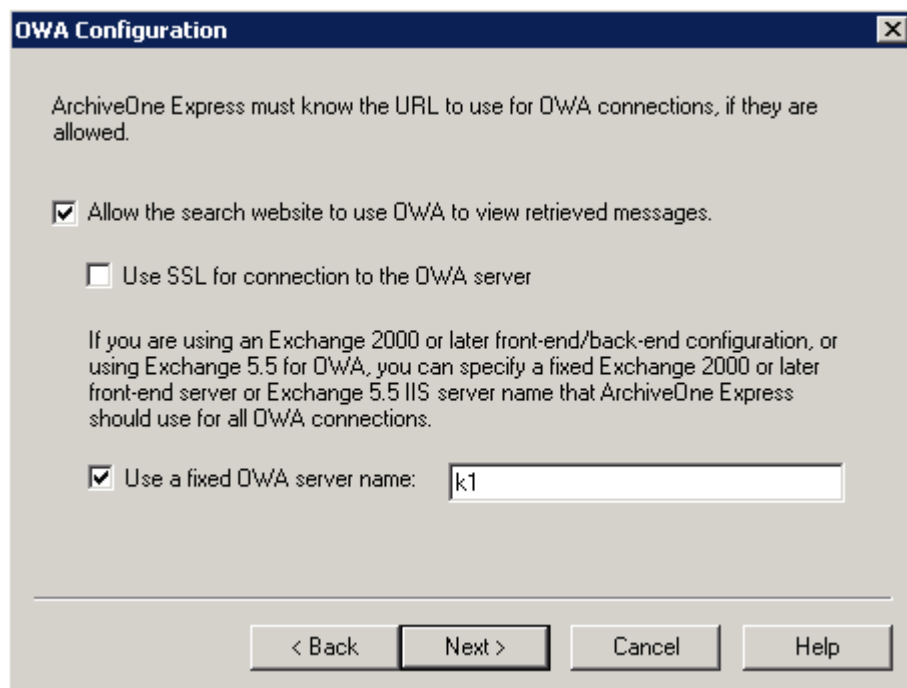


Diagram 10

14. You are now given the opportunity to change the default folder names that ArchiveOne injects into each user's mailbox. These will appear in each Outlook session and are required to provide the end-user Archive Search and Browse Archive functionality.
15. The next page shows you the location for the temporary storage data. This is where ArchiveOne stores transitory data during the archiving process. 10GB of space should be available at this location.
16. The Offline Archives page is the last dialog and affords you the opportunity to configure a location for the user's Offline Repository. The default is to store it in the users Windows Profile under application data.
17. You have now finished initial ArchiveOne Express configuration. You should now enter mailboxes into Mailbox Manager and configure a schedule to run the default Policies.
18. Right click on the Mailbox Manager node and click '**Add New Mailbox**' (Diagram 11). Please add all the Mailboxes that you require archiving. You can add as many as you have licenses for. Policies are run against these Mailboxes.

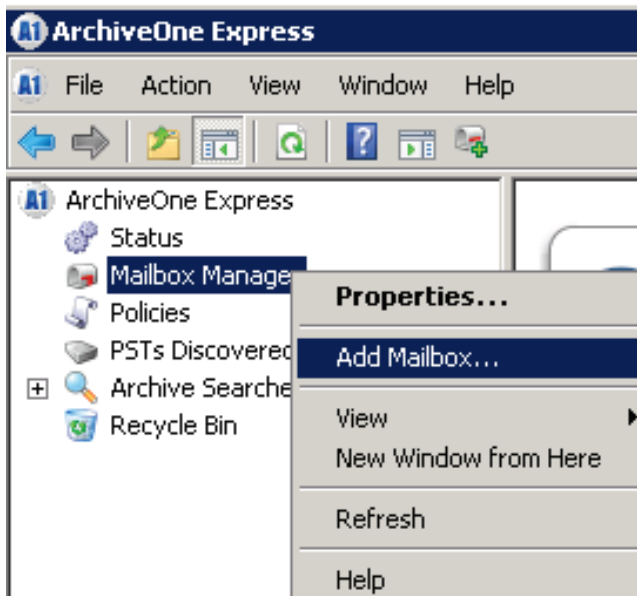


Diagram 11

19. Finally, right click the status node and click schedule. You can set how often you wish the email and journaling policies to run.
20. Configuration is now complete.

For more information

For assistance with other features of ArchiveOne Express, see more ArchiveOne Express documentation available from C2C:

- [C2C website](#)
- [C2C Support Portal](#)